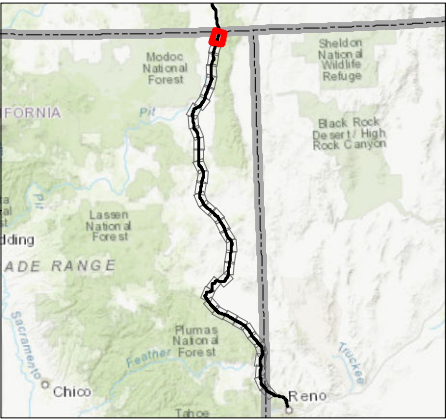


APPENDIX J

Soils Mapbook



Notes

1. Coordinate System: NAD 1983 UTM Zone 10N
2. Data source: Esri 2020; USGS 2020; USDA, NRCS 2020
3. Service Layer Credits: Source: Esri, Maxar, GeoEye, Earthstar Geographics, CNES/Airbus DS, USDA, USGS, AeroGRID, IGN, and the GIS User Community

Sources: Esri, HERE, Garmin, Intermap, increment P Corp., GEBCO, USGS, FAO, NPS, NRCAN, GeoBase, IGN, Kadaster NL, Ordnance Survey, Esri Japan, METI, Esri China (Hong Kong), [c]

- Alignment
□ 500-foot Buffer
- SSURGO Soil Classification
- Mapunit Name
- Calimus gravelly loam, 2 to 5 percent slopes
 - Donica gravelly clay loam, 2 to 9 percent slopes
 - Drews clay loam, 2 to 5 percent slopes
 - Drews clay loam, wet, 0 to 2 percent slopes
 - Drews gravelly loam, 0 to 9 percent slopes
 - Pit silty clay loam, 0 to 2 percent slopes

0 0.35 0.7 Miles
1:30,000 (At Original document size of 11x17)



Project Location 2272020011
Prineville, OR to Reno, NV
Prepared by JC on 2020-07-13
Technical Review by CH on 2020-07-13
Independent Review by CS on 2020-07-13

Client/Project
Zayo
Fiber Optic Line--Prineville to Reno
September 2020

Figure No. **Appendix J** Page 1 of 37

Title
**SSURGO Soils Classifications
Proposed Prineville to Reno
Fiber Optic Line**



Notes

1. Coordinate System: NAD 1983 UTM Zone 10N
2. Data source: Esri 2020; USGS 2020; USDA, NRCS 2020
3. Service Layer Credits: Source: Esri, Maxar, GeoEye, Earthstar Geographics, CNES/Airbus DS, USDA, USGS, AeroGRID, IGN, and the GIS User Community
Sources: Esri, HERE, Garmin, Intermap, increment P Corp., GEBCO, USGS, FAO, NPS, NRCAN, GeoBase, IGN, Kadaster NL, Ordnance Survey, Esri Japan, METI, Esri China (Hong Kong), (c)

- Alignment
□ 500-foot Buffer
- SSURGO Soil Classification
- Mapunit Name
- Bieber gravelly loam, 0 to 9 percent slopes
 - Daphnedale very cobbly loam, deep variant, 30 to 50 percent slopes
 - Daphnedale very cobbly loam, deep variant, 5 to 15 percent slopes
 - Drews clay loam, 2 to 5 percent slopes
 - Drews gravelly loam, 0 to 9 percent slopes
 - Drews gravelly loam, 15 to 30 percent slopes
 - Drews loam, 0 to 5 percent slopes, goose lake valley, southern part, mlra 21
 - Lorella cobbly clay loam, 30 to 50 percent slopes
 - Modoc gravelly loam, 0 to 9 percent slopes
 - Pit silty clay loam, 0 to 2 percent slopes
 - Puls extremely stony clay loam, 0 to 9 percent slopes
 - Rock outcrop-Lithic Xerorthents complex
 - Salisbury clay loam, 9 to 15 percent slopes
 - Salisbury gravelly loam, 0 to 9 percent slopes
 - Water

0 0.35 0.7 Miles
1:30,000 (At Original document size of 11x17)

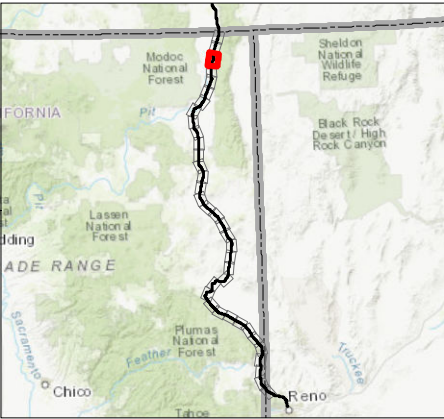


Project Location 2272020011
Prineville, OR to Reno, NV
Prepared by JC on 2020-07-13
Technical Review by CH on 2020-07-13
Independent Review by CS on 2020-07-13

Client/Project
Zayo
Fiber Optic Line--Prineville to Reno
September 2020

Figure No. **Appendix J** Page 2 of 37

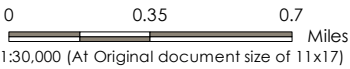
Title
**SSURGO Soils Classifications
Proposed Prineville to Reno
Fiber Optic Line**



Notes

1. Coordinate System: NAD 1983 UTM Zone 10N
2. Data source: Esri 2020; USGS 2020; USDA, NRCS 2020
3. Service Layer Credits: Source: Esri, Maxar, GeoEye, Earthstar Geographics, CNES/Airbus DS, USDA, USGS, AeroGRID, IGN, and the GIS User Community
Sources: Esri, HERE, Garmin, Intermap, increment P Corp., GEBCO, USGS, FAO, NPS, NRCAN, GeoBase, IGN, Kadaster NL, Ordnance Survey, Esri Japan, METI, Esri China (Hong Kong), (c)

- Alignment
[] 500-foot Buffer
- SSURGO Soil Classification
- Mapunit Name
- Bieber gravelly loam, 0 to 9 percent slopes
 - Calimus loam, 2 to 9 percent slopes
 - Donica gravelly clay loam, 2 to 9 percent slopes
 - Drews clay loam, 2 to 5 percent slopes
 - Drews gravelly loam, 0 to 9 percent slopes
 - Gleason gravelly loam, 30 to 50 percent slopes
 - Kinkel loam, 2 to 15 percent slopes
 - Kinkel loam, 30 to 50 percent slopes
 - Lorella cobbly clay loam, 30 to 50 percent slopes
 - Modoc gravelly loam, 0 to 9 percent slopes
 - Pit silty clay loam, 0 to 2 percent slopes
 - Puls extremely stony clay loam, 0 to 9 percent slopes
 - Rock outcrop-Lithic Xerorthents complex
 - Salisbury gravelly loam, 0 to 9 percent slopes
 - Woodcock stony loam, 30 to 50 percent slopes

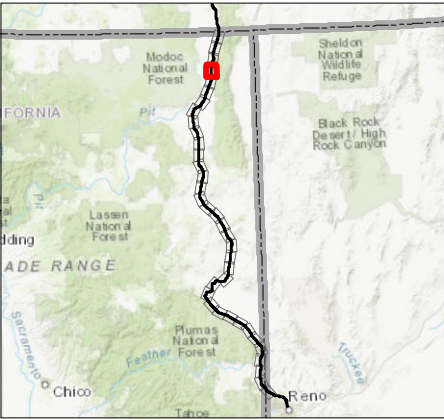
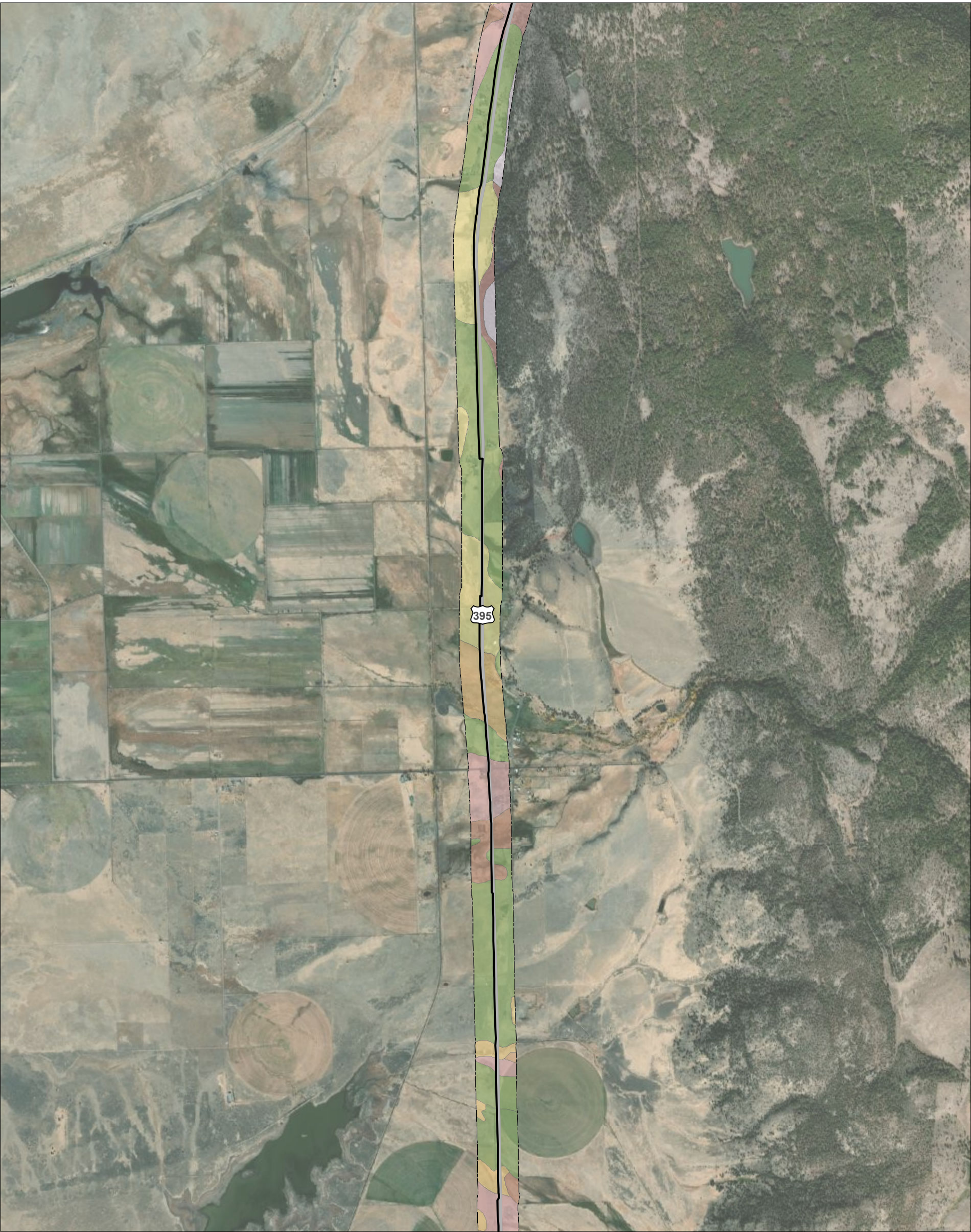


Project Location 2272020011
Prineville, OR to Reno, NV
Prepared by JC on 2020-07-13
Technical Review by CH on 2020-07-13
Independent Review by CS on 2020-07-13

Client/Project
Zayo
Fiber Optic Line--Prineville to Reno
September 2020

Figure No. **Appendix J** Page 3 of 37

Title
**SSURGO Soils Classifications
Proposed Prineville to Reno
Fiber Optic Line**



Notes

1. Coordinate System: NAD 1983 UTM Zone 10N
2. Data source: Esri 2020; USGS 2020; USDA, NRCS 2020
3. Service Layer Credits: Source: Esri, Maxar, GeoEye, Earthstar Geographics, CNES/Airbus DS, USDA, USGS, AeroGRID, IGN, and the GIS User Community
Sources: Esri, HERE, Garmin, Intermap, increment P Corp., GEBCO, USGS, FAO, NPS, NRCAN, GeoBase, IGN, Kadaster NL, Ordnance Survey, Esri Japan, METI, Esri China (Hong Kong), [c]

- Alignment
[] 500-foot Buffer
- SSURGO Soil Classification
- Mapunit Name
- Barnard gravelly loam, 0 to 9 percent slopes
 - Bieber gravelly loam, 0 to 9 percent slopes
 - Drews clay loam, 2 to 5 percent slopes
 - Drews clay loam, wet, 0 to 2 percent slopes
 - Drews gravelly loam, 0 to 9 percent slopes
 - Gravel pits
 - Jenny silty clay, 0-5% slopes
 - Lakeview loam, 0 to 2 percent slopes, pit river area, mlra 21
 - Modoc gravelly loam, 0 to 9 percent slopes
 - Pit clay, 2 to 5 percent slopes
 - Pit silty clay loam, 0 to 2 percent slopes
 - Rock outcrop-Lithic Xerorthents complex
 - Salisbury gravelly loam, 0 to 9 percent slopes
 - Woodcock stony loam, 30 to 50 percent slopes

0 0.35 0.7 Miles
1:30,000 (At Original document size of 11x17)

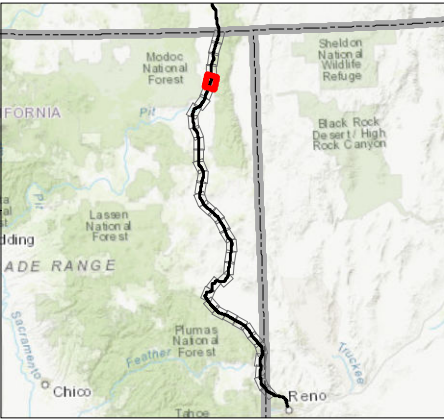
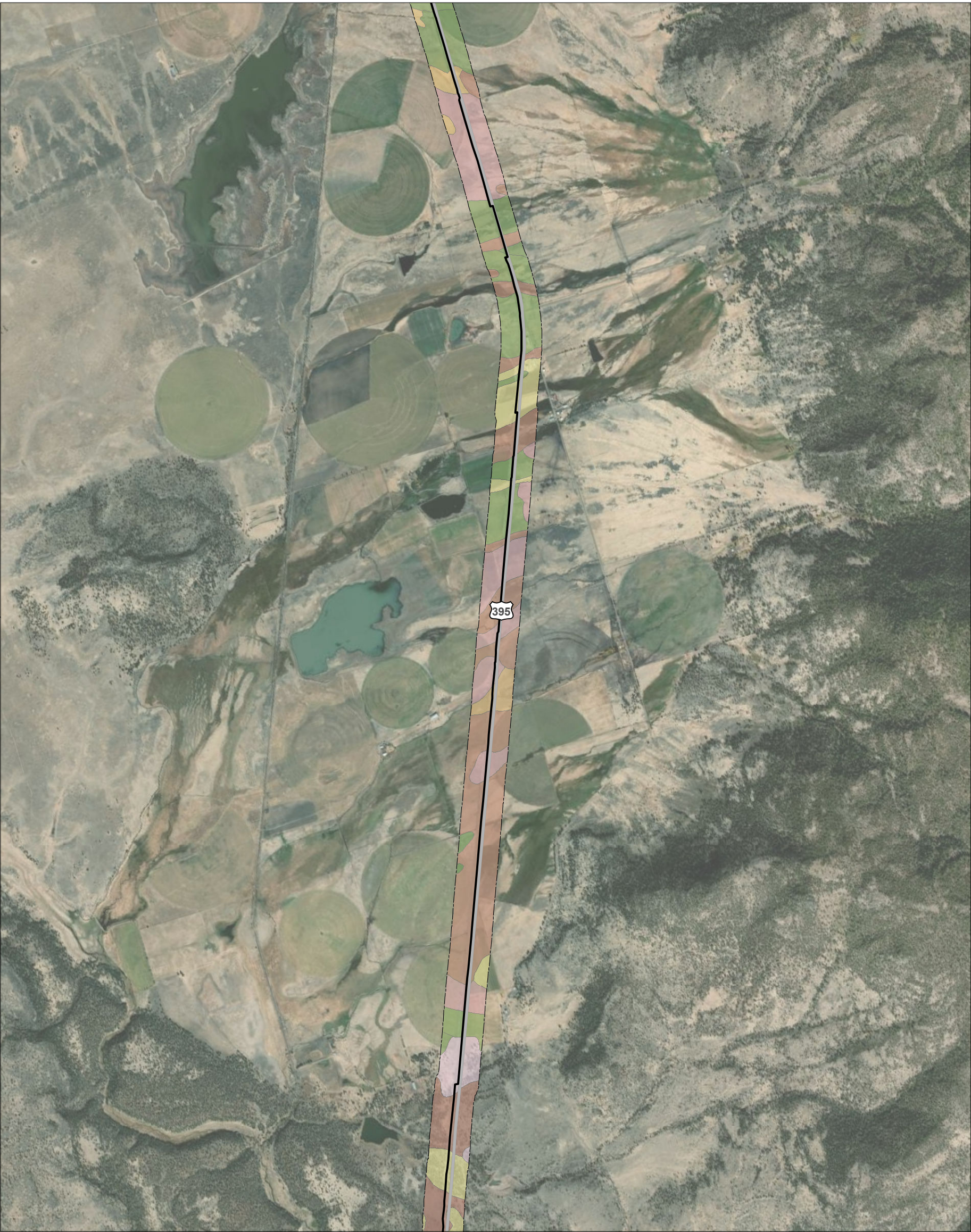


Project Location 2272020011
Prineville, OR to Reno, NV
Prepared by JC on 2020-07-13
Technical Review by CH on 2020-07-13
Independent Review by CS on 2020-07-13

Client/Project
Zayo
Fiber Optic Line--Prineville to Reno
September 2020

Figure No. **Appendix J** Page 4 of 37

Title
**SSURGO Soils Classifications
Proposed Prineville to Reno
Fiber Optic Line**



Notes

1. Coordinate System: NAD 1983 UTM Zone 10N
2. Data source: Esri 2020; USGS 2020; USDA, NRCS 2020
3. Service Layer Credits: Source: Esri, Maxar, GeoEye, Earthstar Geographics, CNES/Airbus DS, USDA, USGS, AeroGRID, IGN, and the GIS User Community
Sources: Esri, HERE, Garmin, Intermap, increment P Corp., GEBCO, USGS, FAO, NPS, NRCAN, GeoBase, IGN, Kadaster NL, Ordnance Survey, Esri Japan, METI, Esri China (Hong Kong), (c)

- Alignment
□ 500-foot Buffer
- SSURGO Soil Classification
- Mapunit Name
- Alturas loam
 - Barnard gravelly loam, 0 to 9 percent slopes
 - Bieber cobbly loam, 2 to 15 percent slopes, eroded
 - Bieber gravelly loam, 0 to 9 percent slopes
 - Deven-Rock outcrop complex, 2 to 30 percent slopes
 - Drews clay loam, 2 to 5 percent slopes
 - Drews clay loam, wet, 0 to 2 percent slopes
 - Jenny silty clay, 0-5% slopes
 - Lakeview loam, 0 to 2 percent slopes, pit river area, mlra 21
 - Pit clay, 2 to 5 percent slopes
 - Pit silty clay loam, 0 to 2 percent slopes
 - Puls extremely stony clay loam, 0 to 9 percent slopes
 - Salisbury gravelly loam, 0 to 9 percent slopes
 - Salisbury very fine sandy loam, 0 to 9 percent slopes
 - Thoms-Exel complex

0 0.35 0.7 Miles
1:30,000 (At Original document size of 11x17)



Project Location 2272020011
Prineville, OR to Reno, NV
Prepared by JC on 2020-07-13
Technical Review by CH on 2020-07-13
Independent Review by CS on 2020-07-13

Client/Project
Zayo
Fiber Optic Line--Prineville to Reno
September 2020

Figure No. **Appendix J** Page 5 of 37

Title
**SSURGO Soils Classifications
Proposed Prineville to Reno
Fiber Optic Line**



Notes

1. Coordinate System: NAD 1983 UTM Zone 10N
2. Data source: Esri 2020; USGS 2020; USDA, NRCS 2020
3. Service Layer Credits: Source: Esri, Maxar, GeoEye, Earthstar Geographics, CNES/Airbus DS, USDA, USGS, AeroGRID, IGN, and the GIS User Community
Sources: Esri, HERE, Garmin, Intermap, increment P Corp., GEBCO, USGS, FAO, NPS, NRCAN, GeoBase, IGN, Kadaster NL, Ordnance Survey, Esri Japan, METI, Esri China (Hong Kong), (c)

- Alignment
□ 500-foot Buffer
- SSURGO Soil Classification
- Mapunit Name
- Barnard clay loam, 9 to 15 percent slopes
 - Barnard cobbly loam, 0 to 9 percent slopes
 - Barnard gravelly loam, 0 to 9 percent slopes
 - Bieber gravelly loam, 0 to 9 percent slopes
 - Bieber gravelly loam, 9 to 15 percent slopes
 - Bunfingville clay loam, 0 to 2 percent slopes
 - Daphnedale stony loam, 30 to 50 percent slopes
 - Daphnedale very cobbly loam, deep variant, 30 to 50 percent slopes
 - Daphnedale very cobbly loam, deep variant, 5 to 15 percent slopes
 - Delma loam, 15 to 30 percent slopes, eroded
 - Deven-Rock outcrop complex, 2 to 30 percent slopes
 - Donica gravelly clay loam, 2 to 9 percent slopes
 - Drews gravelly loam, 0 to 9 percent slopes
 - Karcil very cobbly clay, 0 to 9 percent slopes
 - Lakeview loam, 0 to 2 percent slopes, pit river area, mlra 21
 - Lorella loam, 30 to 50 percent slopes
 - Lorella loam, 5 to 30 percent slopes
 - Lorella loam, 5 to 30 percent slopes, eroded
 - Modoc sandy loam, 0 to 9 percent slopes
 - Puls extremely stony clay loam, 0 to 9 percent slopes
 - Rock outcrop-Lithic Xerorthents complex
 - Thoms-Exel complex
 - Xerofluvents, occasionally flooded

0 0.35 0.7 Miles
1:30,000 (At Original document size of 11x17)



Project Location 2272020011
Prineville, OR to Reno, NV
Prepared by JC on 2020-07-13
Technical Review by CH on 2020-07-13
Independent Review by CS on 2020-07-13

Client/Project
Zayo
Fiber Optic Line--Prineville to Reno
September 2020

Figure No. Appendix J Page 6 of 37

Title
**SSURGO Soils Classifications
Proposed Prineville to Reno
Fiber Optic Line**



Notes

1. Coordinate System: NAD 1983 UTM Zone 10N
2. Data source: Esri 2020; USGS 2020; USDA, NRCS 2020
3. Service Layer Credits: Source: Esri, Maxar, GeoEye, Earthstar Geographics, CNES/Airbus DS, USDA, USGS, AeroGRID, IGN, and the GIS User Community
Sources: Esri, HERE, Garmin, Intermap, increment P Corp., GEBCO, USGS, FAO, NPS, NRCAN, GeoBase, IGN, Kadaster NL, Ordnance Survey, Esri Japan, METI, Esri China (Hong Kong), (c)

- Alignment
- 500-foot Buffer
- SSURGO Soil Classification
- Mapunit Name
- Barnard gravelly loam, 0 to 9 percent slopes
- Bieber cobbly loam, 2 to 15 percent slopes, eroded
- Bieber gravelly loam, 0 to 9 percent slopes
- Buntingville clay loam, 0 to 2 percent slopes
- Calimus loam, 0 to 2 percent slopes, high precip, MLRA 21
- Daphnedale loam, 2 to 9 percent slopes
- Daphnedale stony loam, 30 to 50 percent slopes
- Daphnedale very cobbly loam, deep variant, 30 to 50 percent slopes
- Delma cobbly loam, 0 to 9 percent slopes
- Gravel pits
- Ladd sandy loam, 0 to 2 percent slopes
- Ladd sandy loam, 2 to 9 percent slopes
- Lakeview loam, 0 to 2 percent slopes, pit river area, mlra 21
- Modoc gravelly loam, 0 to 9 percent slopes
- Puls extremely stony clay loam, 0 to 9 percent slopes
- Rock outcrop-Lithic Xerorthents complex
- Water
- Xerofluvents, occasionally flooded

0 0.35 0.7 Miles
1:30,000 (At Original document size of 11x17)



Project Location 2272020011
Prineville, OR to Reno, NV
Prepared by JC on 2020-07-13
Technical Review by CH on 2020-07-13
Independent Review by CS on 2020-07-13

Client/Project
Zayo
Fiber Optic Line--Prineville to Reno
September 2020

Figure No. Appendix J Page 7 of 37

Title
**SSURGO Soils Classifications
Proposed Prineville to Reno
Fiber Optic Line**



Notes

1. Coordinate System: NAD 1983 UTM Zone 10N
2. Data source: Esri 2020; USGS 2020; USDA, NRCS 2020
3. Service Layer Credits: Source: Esri, Maxar, GeoEye, Earthstar Geographics, CNES/Airbus DS, USDA, USGS, AeroGRID, IGN, and the GIS User Community

Sources: Esri, HERE, Garmin, Intermap, increment P Corp., GEBCO, USGS, FAO, NPS, NRCAN, GeoBase, IGN, Kadaster NL, Ordnance Survey, Esri Japan, MEI, Esri China (Hong Kong), (c)

- Alignment
[] 500-foot Buffer
- SSURGO Soil Classification
- Mapunit Name
- Alturas loam
 - Barnard gravelly loam, 0 to 9 percent slopes
 - Bieber gravelly loam, 0 to 9 percent slopes
 - Buntingville clay loam, 0 to 2 percent slopes
 - Casuse sandy loam, 2 to 9 percent slopes
 - Gravel pits
 - Ladd sandy loam, 0 to 2 percent slopes
 - Ladd sandy loam, 2 to 9 percent slopes
 - Modoc gravelly loam, 0 to 9 percent slopes
 - Modoc sandy loam, 0 to 9 percent slopes
 - Pasquetti silty clay loam, drained
 - Pasquetti silty clay loam, partially drained
 - Pineal silt loam
 - Pit silty clay loam, 0 to 2 percent slopes
 - Tuff outcrop-Casuse, eroded complex, 2 to 15 percent slopes

0 0.35 0.7 Miles
1:30,000 (At Original document size of 11x17)

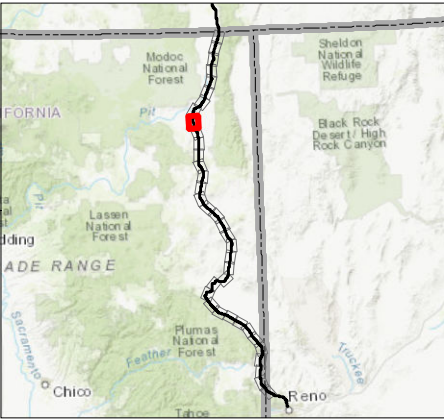
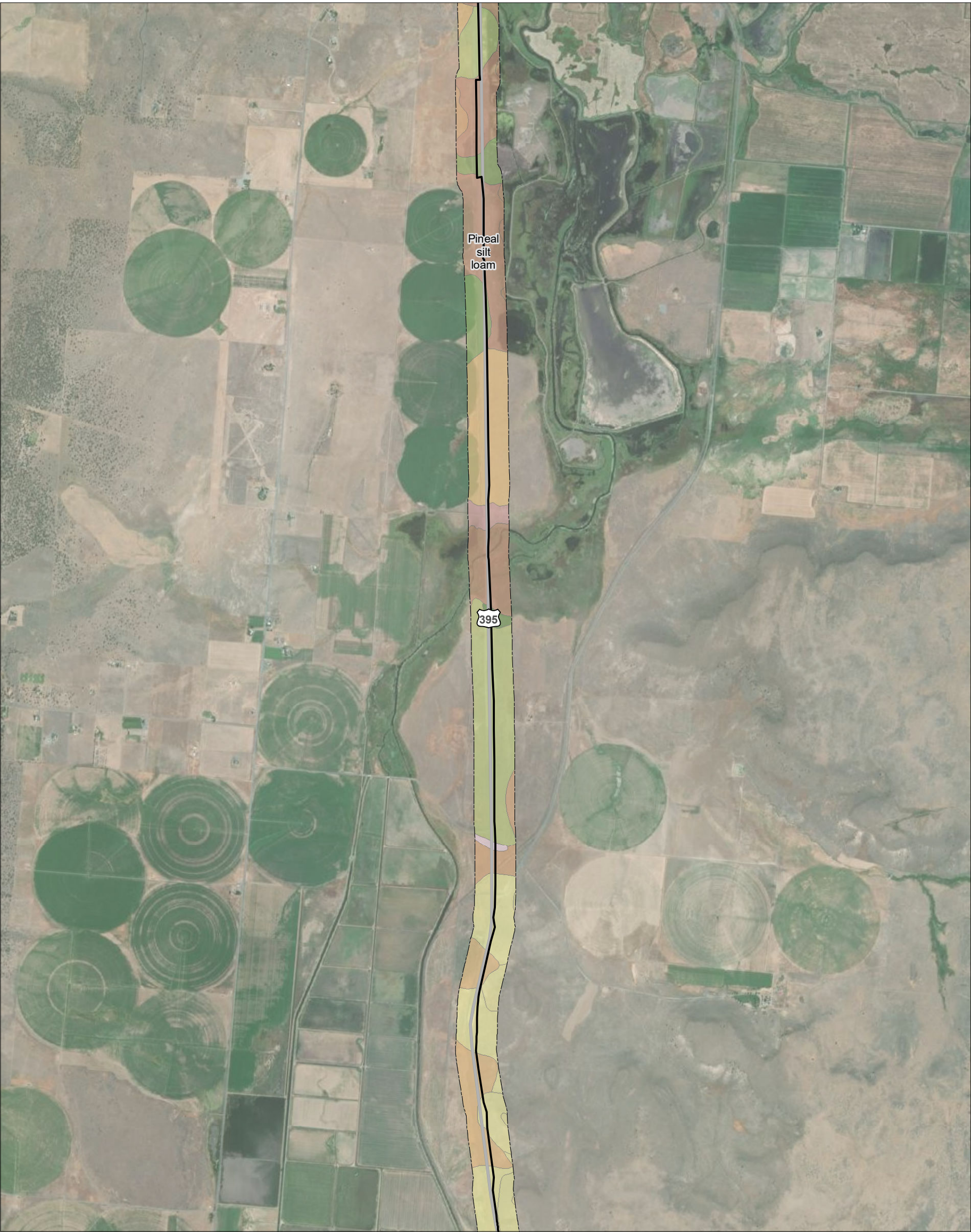


Project Location 2272020011
Prineville, OR to Reno, NV
Prepared by JC on 2020-07-13
Technical Review by CH on 2020-07-13
Independent Review by CS on 2020-07-13

Client/Project
Zayo
Fiber Optic Line--Prineville to Reno
September 2020

Figure No. **Appendix J** Page 8 of 37

Title
**SSURGO Soils Classifications
Proposed Prineville to Reno
Fiber Optic Line**



Notes

1. Coordinate System: NAD 1983 UTM Zone 10N
2. Data source: Esri 2020; USGS 2020; USDA, NRCS 2020
3. Service Layer Credits: Source: Esri, Maxar, GeoEye, Earthstar Geographics, CNES/Airbus DS, USDA, USGS, AeroGRID, IGN, and the GIS User Community
Sources: Esri, HERE, Garmin, Intermap, increment P Corp., GEBCO, USGS, FAO, NPS, NRCAN, GeoBase, IGN, Kadaster NL, Ordnance Survey, Esri Japan, METI, Esri China (Hong Kong), (c)

- Alignment
□ 500-foot Buffer
- SSURGO Soil Classification
- Mapunit Name
- Alturas loam
 - Bieber gravelly loam, 0 to 9 percent slopes
 - Casuse sandy loam, 2 to 9 percent slopes
 - Daphnedale stony loam, 30 to 50 percent slopes
 - Delma cobbly loam, 0 to 9 percent slopes
 - Delma loam, 30 to 50 percent slopes
 - Deven-Rock outcrop complex, 2 to 30 percent slopes
 - Ladd sandy loam, 0 to 2 percent slopes
 - Ladd sandy loam, 2 to 9 percent slopes
 - Modoc sandy loam, 0 to 9 percent slopes
 - Pasquetti silty clay loam, drained
 - Pasquetti silty clay loam, partially drained
 - Pineal silt loam
 - Rumbo loam, 0 to 2 percent slopes
 - Tuff outcrop-Casuse, eroded complex, 2 to 15 percent slopes

0 0.35 0.7 Miles
1:30,000 (At Original document size of 11x17)

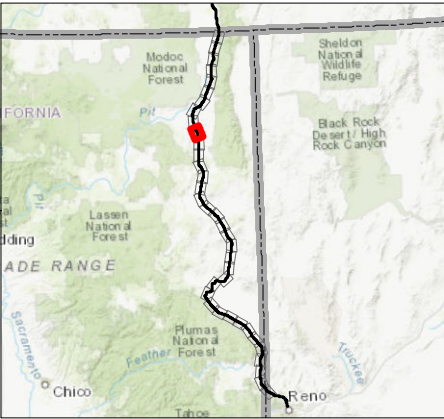


Project Location 2272020011
Prineville, OR to Reno, NV
Prepared by JC on 2020-07-13
Technical Review by CH on 2020-07-13
Independent Review by CS on 2020-07-13

Client/Project
Zayo
Fiber Optic Line--Prineville to Reno
September 2020

Figure No. Appendix J Page 9 of 37

Title
**SSURGO Soils Classifications
Proposed Prineville to Reno
Fiber Optic Line**

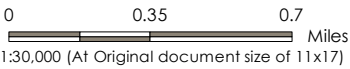


Notes

1. Coordinate System: NAD 1983 UTM Zone 10N
2. Data source: Esri 2020; USGS 2020; USDA, NRCS 2020
3. Service Layer Credits: Source: Esri, Maxar, GeoEye, Earthstar Geographics, CNES/Airbus DS, USDA, USGS, AeroGRID, IGN, and the GIS User Community
Sources: Esri, HERE, Garmin, Intermap, increment P Corp., GEBCO, USGS, FAO, NPS, NRCAN, GeoBase, IGN, Kadaster NL, Ordnance Survey, Esri Japan, METI, Esri China (Hong Kong), (c)

- Alignment
- []

 500-foot Buffer
- SSURGO Soil Classification
- Mapunit Name
- Balman loam
- Bieber gravelly loam, 0 to 9 percent slopes
- Buntingville clay loam, 0 to 2 percent slopes
- Daphnedale stony loam, 30 to 50 percent slopes
- Delma cobbly loam, 0 to 9 percent slopes
- Delma loam, 30 to 50 percent slopes
- Deven-Rock outcrop complex, 2 to 30 percent slopes
- Karcal-Ninekar complex, 0 to 9 percent slopes
- Ladd sandy loam, 2 to 9 percent slopes
- Modoc sandy loam, 0 to 9 percent slopes
- Pasquetti silty clay loam, drained
- Pit silty clay loam, 0 to 2 percent slopes



Project Location

Prineville, OR to Reno, NV

2272020011

Prepared by JC on 2020-07-13

Technical Review by CH on 2020-07-13

Independent Review by CS on 2020-07-13

Client/Project

Zayo

Fiber Optic Line--Prineville to Reno

September 2020

Figure No.

Appendix J

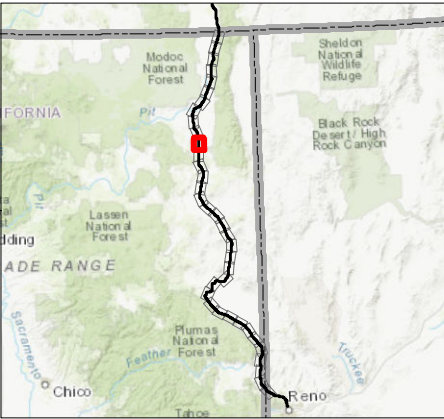
Page 10 of 37

Title

SSURGO Soils Classifications

Proposed Prineville to Reno

Fiber Optic Line



Notes

1. Coordinate System: NAD 1983 UTM Zone 10N
2. Data source: Esri 2020; USGS 2020; USDA, NRCS 2020
3. Service Layer Credits: Source: Esri, Maxar, GeoEye, Earthstar Geographics, CNES/Airbus DS, USDA, USGS, AeroGRID, IGN, and the GIS User Community
Sources: Esri, HERE, Garmin, Intermap, increment P Corp., GEBCO, USGS, FAO, NPS, NRCAN, GeoBase, IGN, Kadaster NL, Ordnance Survey, Esri Japan, METI, Esri China (Hong Kong), (c)

- Alignment
□ 500-foot Buffer
- SSURGO Soil Classification
- Mapunit Name
- Balman loam
 - Barnard clay loam, 9 to 15 percent slopes
 - Barnard gravelly loam, 0 to 9 percent slopes
 - Bieber gravelly loam, 0 to 9 percent slopes
 - Buntingville clay loam, 0 to 2 percent slopes
 - Daphnedale stony loam, 30 to 50 percent slopes
 - Delma cobbly loam, 0 to 9 percent slopes
 - Deven-Rock outcrop complex, 2 to 30 percent slopes
 - Karcil-Ninekar complex, 0 to 9 percent slopes
 - Lakeview loam, 0 to 2 percent slopes, pit river area, mlra 21
 - Modoc sandy loam, 0 to 9 percent slopes
 - Pasquetti silty clay loam, drained

0 0.35 0.7 Miles
1:30,000 (At Original document size of 11x17)

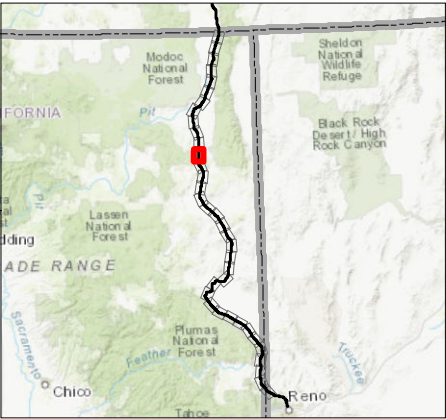
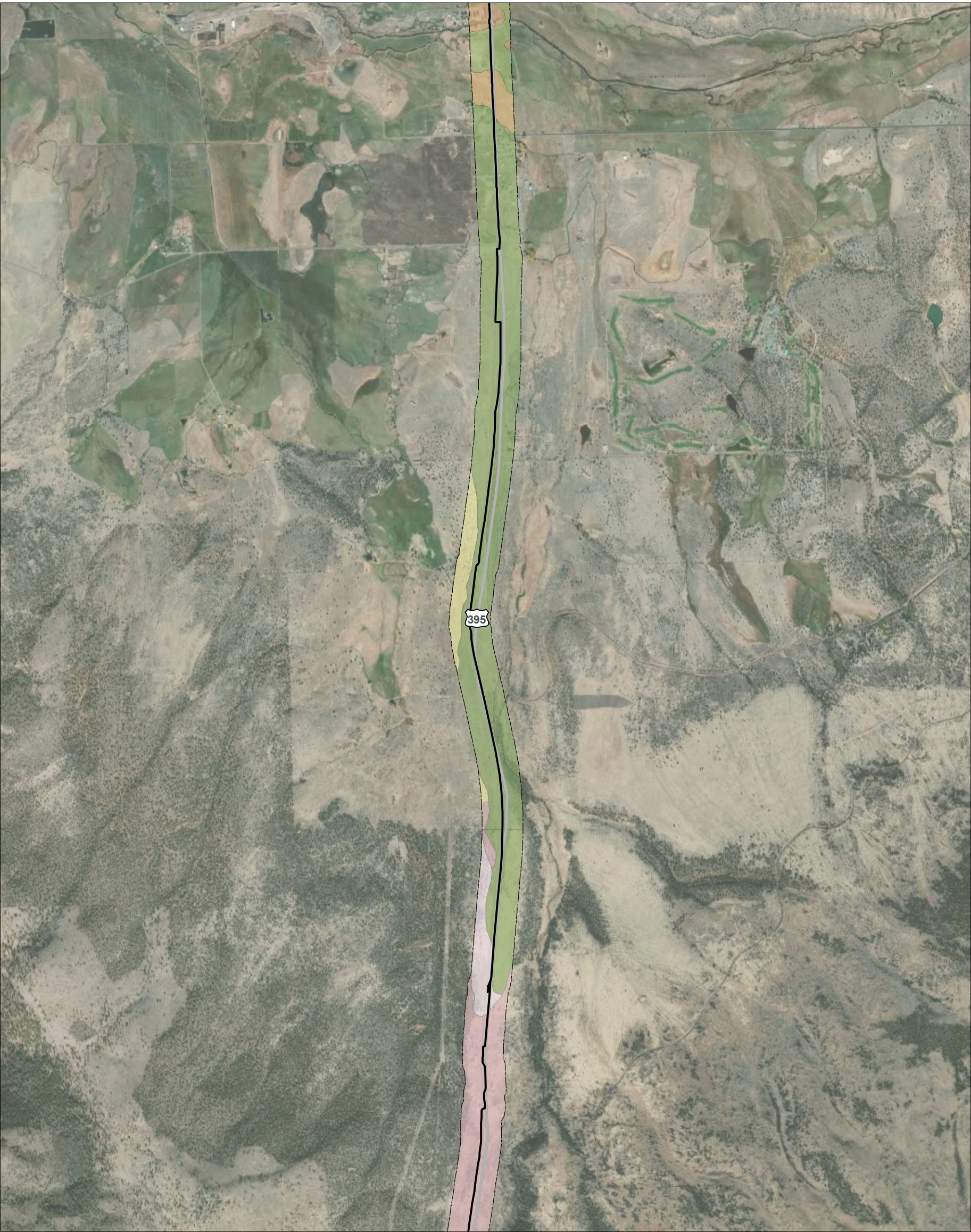


Project Location 2272020011
Prineville, OR to Reno, NV
Prepared by JC on 2020-07-13
Technical Review by CH on 2020-07-13
Independent Review by CS on 2020-07-13

Client/Project
Zayo
Fiber Optic Line--Prineville to Reno
September 2020

Figure No. **Appendix J** Page 11 of 37

Title
**SSURGO Soils Classifications
Proposed Prineville to Reno
Fiber Optic Line**



Notes

1. Coordinate System: NAD 1983 UTM Zone 10N
2. Data source: Esri 2020; USGS 2020; USDA, NRCS 2020
3. Service Layer Credits: Source: Esri, Maxar, GeoEye, Earthstar Geographics, CNES/Airbus DS, USDA, USGS, AeroGRID, IGN, and the GIS User Community
Sources: Esri, HERE, Garmin, Intermap, increment P Corp., GEBCO, USGS, FAO, NPS, NRCAN, GeoBase, IGN, Kadaster NL, Ordnance Survey, Esri Japan, METI, Esri China (Hong Kong), (c)

- Alignment
□ 500-foot Buffer
- SSURGO Soil Classification
- Mapunit Name
- Barnard clay loam, 9 to 15 percent slopes
 - Barnard cobbly loam, 0 to 9 percent slopes
 - Barnard gravelly loam, 0 to 9 percent slopes
 - Bieber cobbly loam, 2 to 9 percent slopes
 - Bieber gravelly loam, 0 to 9 percent slopes
 - Buntingville clay loam, 0 to 2 percent slopes
 - Delma cobbly loam, 9 to 30 percent slopes
 - Lakeview loam, 0 to 2 percent slopes, pit river area, mlra 21
 - Modoc sandy loam, 0 to 9 percent slopes
 - Searles-Orhood-Devada association, 5 to 30 percent slopes
 - Tunnison-Devada association, 2 to 9 percent slopes

0 0.35 0.7 Miles
1:30,000 (At Original document size of 11x17)

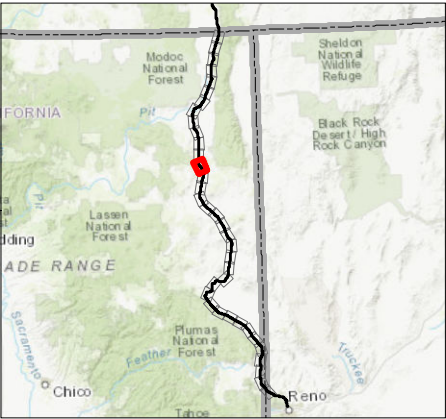


Project Location 2272020011
Prineville, OR to Reno, NV
Prepared by JC on 2020-07-13
Technical Review by CH on 2020-07-13
Independent Review by CS on 2020-07-13

Client/Project
Zayo
Fiber Optic Line--Prineville to Reno
September 2020

Figure No. **Appendix J** Page 12 of 37

Title
**SSURGO Soils Classifications
Proposed Prineville to Reno
Fiber Optic Line**



Notes

1. Coordinate System: NAD 1983 UTM Zone 10N
2. Data source: Esri 2020; USGS 2020; USDA, NRCS 2020
3. Service Layer Credits: Source: Esri, Maxar, GeoEye, Earthstar Geographics, CNES/Airbus DS, USDA, USGS, AeroGRID, IGN, and the GIS User Community
Sources: Esri, HERE, Garmin, Intermap, increment P Corp., GEBCO, USGS, FAO, NPS, NRCAN, GeoBase, IGN, Kadaster NL, Ordnance Survey, Esri Japan, METI, Esri China (Hong Kong), [c]

- Alignment
□ 500-foot Buffer
- SSURGO Soil Classification
- Mapunit Name
- Buckbay-Orhood-Fredonyer association, 5 to 30 percent slopes
 - Devada-Petescreek-Fiddler association, 2 to 30 percent slopes
 - Fiddler-Orhood-Petescreek association, 5 to 30 percent slopes
 - Ravendale silty clay, 0 to 2 percent slopes, occasionally flooded
 - Searles-Orhood-Devada association, 5 to 30 percent slopes
 - Water

0 0.35 0.7 Miles
1:30,000 (At Original document size of 11x17)

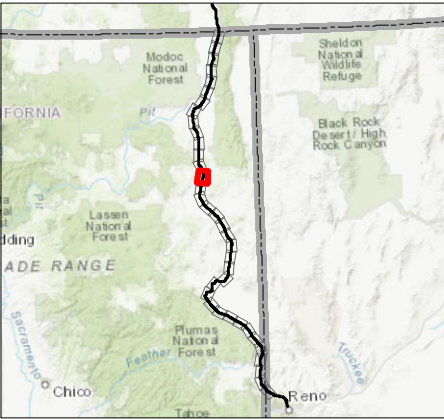


Project Location 2272020011
Prineville, OR to Reno, NV
Prepared by JC on 2020-07-13
Technical Review by CH on 2020-07-13
Independent Review by CS on 2020-07-13

Client/Project
Zayo
Fiber Optic Line--Prineville to Reno
September 2020

Figure No. **Appendix J** Page 13 of 37

Title
**SSURGO Soils Classifications
Proposed Prineville to Reno
Fiber Optic Line**



Notes

1. Coordinate System: NAD 1983 UTM Zone 10N
2. Data source: Esri 2020; USGS 2020; USDA, NRCS 2020
3. Service Layer Credits: Source: Esri, Maxar, GeoEye, Earthstar Geographics, CNES/Airbus DS, USDA, USGS, AeroGRID, IGN, and the GIS User Community
Sources: Esri, HERE, Garmin, Intermap, increment P Corp., GEBCO, USGS, FAO, NPS, NRCAN, GeoBase, IGN, Kadaster NL, Ordnance Survey, Esri Japan, METI, Esri China (Hong Kong), (c)

- Alignment
□ 500-foot Buffer
- SSURGO Soil Classification
- Mapunit Name
- Cochran very cobbly loam, 5 to 15 percent slopes
 - Devada-Petescreek-Fiddler association, 2 to 30 percent slopes
 - Dryvalley silt loam, sandy substratum, 0 to 2 percent slopes
 - Dryvalley-Playas complex, 0 to 2 percent slopes
 - Fiddler-Orhood-Petescreek association, 5 to 30 percent slopes
 - Lakeview loam, 0 to 2 percent slopes, madeline plains area, mlra 21
 - Orhood very stony sandy loam, 5 to 15 percent slopes
 - Ravendale silty clay, 0 to 2 percent slopes, occasionally flooded
 - Saddlerock silty clay, 0 to 2 percent slopes
 - Searles-Orhood-Devada association, 5 to 30 percent slopes
 - Truax sandy loam, 0 to 5 percent slopes

0 0.35 0.7 Miles
1:30,000 (At Original document size of 11x17)

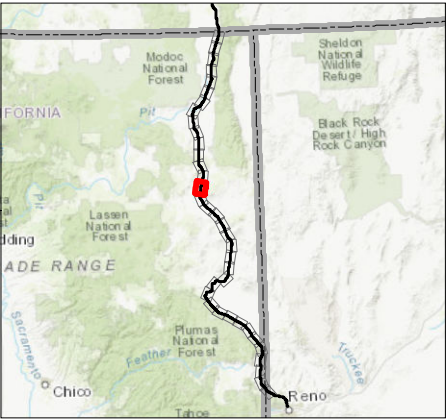


Project Location 2272020011
Prineville, OR to Reno, NV
Prepared by JC on 2020-07-13
Technical Review by CH on 2020-07-13
Independent Review by CS on 2020-07-13

Client/Project
Zayo
Fiber Optic Line--Prineville to Reno
September 2020

Figure No. **Appendix J** Page 14 of 37

Title
**SSURGO Soils Classifications
Proposed Prineville to Reno
Fiber Optic Line**



Notes

1. Coordinate System: NAD 1983 UTM Zone 10N
2. Data source: Esri 2020; USGS 2020; USDA, NRCS 2020
3. Service Layer Credits: Source: Esri, Maxar, GeoEye, Earthstar Geographics, CNES/Airbus DS, USDA, USGS, AeroGRID, IGN, and the GIS User Community
Sources: Esri, HERE, Garmin, Intermap, increment P Corp., GEBCO, USGS, FAO, NPS, NRCAN, GeoBase, IGN, Kadaster NL, Ordnance Survey, Esri Japan, METI, Esri China (Hong Kong), (c)

- Alignment
□ 500-foot Buffer
- SSURGO Soil Classification
- Mapunit Name
- Cochran very cobbly loam, 5 to 15 percent slopes
 - Dryvalley-Playas complex, 0 to 2 percent slopes
 - Pit clay, 0 to 2 percent slopes
 - Ravendale silty clay, 0 to 2 percent slopes, occasionally flooded

0 0.35 0.7 Miles
1:30,000 (At Original document size of 11x17)

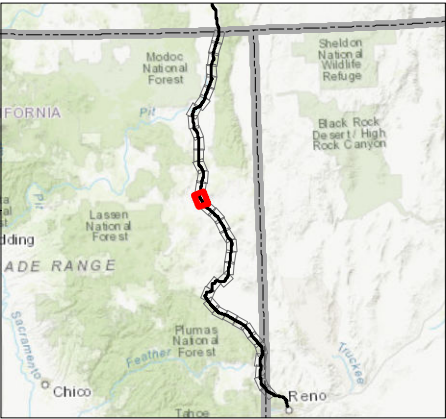


Project Location 2272020011
Prineville, OR to Reno, NV
Prepared by JC on 2020-07-13
Technical Review by CH on 2020-07-13
Independent Review by CS on 2020-07-13

Client/Project
Zayo
Fiber Optic Line--Prineville to Reno
September 2020

Figure No. **Appendix J** Page 15 of 37

Title
**SSURGO Soils Classifications
Proposed Prineville to Reno
Fiber Optic Line**



Notes

1. Coordinate System: NAD 1983 UTM Zone 10N
2. Data source: Esri 2020; USGS 2020; USDA, NRCS 2020
3. Service Layer Credits: Source: Esri, Maxar, GeoEye, Earthstar Geographics, CNES/Airbus DS, USDA, USGS, AeroGRID, IGN, and the GIS User Community
Sources: Esri, HERE, Garmin, Intermap, increment P Corp., GEBCO, USGS, FAO, NPS, NRCAN, GeoBase, IGN, Kadaster NL, Ordnance Survey, Esri Japan, METI, Esri China (Hong Kong), (c)

- Alignment
□ 500-foot Buffer
- SSURGO Soil Classification
- Mapunit Name
- Cochran very cobbly loam, 5 to 15 percent slopes
 - Dryvalley-Playas complex, 0 to 2 percent slopes
 - Pits and Dumps
 - Ravendale silty clay, 0 to 2 percent slopes, occasionally flooded

0 0.35 0.7 Miles
1:30,000 (At Original document size of 11x17)

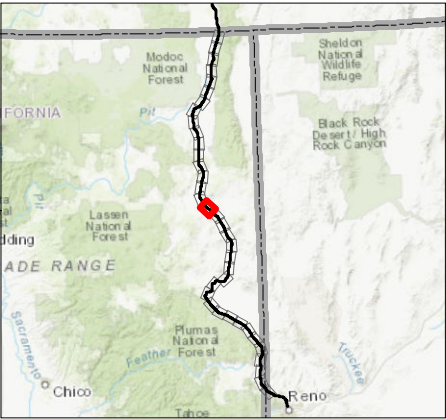


Project Location 2272020011
Prineville, OR to Reno, NV
Prepared by JC on 2020-07-13
Technical Review by CH on 2020-07-13
Independent Review by CS on 2020-07-13

Client/Project
Zayo
Fiber Optic Line--Prineville to Reno
September 2020

Figure No. **Appendix J** Page 16 of 37

Title
**SSURGO Soils Classifications
Proposed Prineville to Reno
Fiber Optic Line**



Notes

1. Coordinate System: NAD 1983 UTM Zone 10N
2. Data source: Esri 2020; USGS 2020; USDA, NRCS 2020
3. Service Layer Credits: Source: Esri, Maxar, GeoEye, Earthstar Geographics, CNES/Airbus DS, USDA, USGS, AeroGRID, IGN, and the GIS User Community
Sources: Esri, HERE, Garmin, Intermap, increment P Corp., GEBCO, USGS, FAO, NPS, NRCAN, GeoBase, IGN, Kadaster NL, Ordnance Survey, Esri Japan, METI, Esri China (Hong Kong), [c]

- Alignment
□ 500-foot Buffer
- SSURGO Soil Classification
- Mapunit Name
- Cochran very cobbly loam, 5 to 15 percent slopes
 - Dryvalley-Playas complex, 0 to 2 percent slopes
 - Ravendale silty clay, 0 to 2 percent slopes, occasionally flooded
 - Searles-Devada-Fivesprings association, 2 to 30 percent slopes

0 0.35 0.7 Miles
1:30,000 (At Original document size of 11x17)

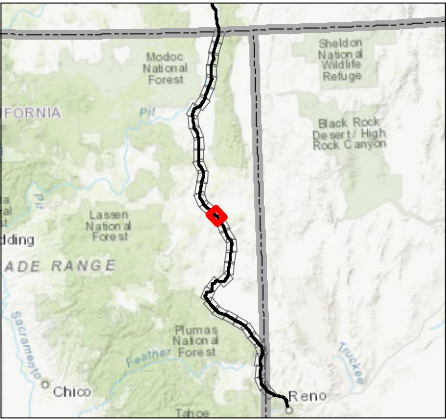


Project Location 2272020011
Prineville, OR to Reno, NV
Prepared by JC on 2020-07-13
Technical Review by CH on 2020-07-13
Independent Review by CS on 2020-07-13

Client/Project
Zayo
Fiber Optic Line--Prineville to Reno
September 2020

Figure No. **Appendix J** Page 17 of 37

Title
**SSURGO Soils Classifications
Proposed Prineville to Reno
Fiber Optic Line**



Notes

1. Coordinate System: NAD 1983 UTM Zone 10N
2. Data source: Esri 2020; USGS 2020; USDA, NRCS 2020
3. Service Layer Credits: Source: Esri, Maxar, GeoEye, Earthstar Geographics, CNES/Airbus DS, USDA, USGS, AeroGRID, IGN, and the GIS User Community
Sources: Esri, HERE, Garmin, Intermap, increment P Corp., GEBCO, USGS, FAO, NPS, NRCAN, GeoBase, IGN, Kadaster NL, Ordnance Survey, Esri Japan, METI, Esri China (Hong Kong), (c)

- Alignment
[] 500-foot Buffer
- SSURGO Soil Classification
- Mapunit Name
- Ravendale silty clay, 0 to 2 percent slopes, occasionally flooded
 - Searles-Devada-Fivesprings association, 2 to 30 percent slopes
 - Terro-Playas complex, 0 to 1 percent slopes

0 0.35 0.7 Miles
1:30,000 (At Original document size of 11x17)

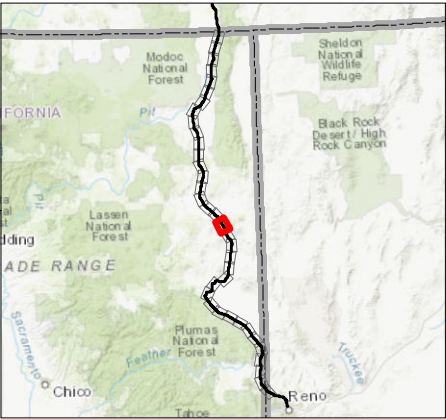


Project Location 2272020011
Prineville, OR to Reno, NV
Prepared by JC on 2020-07-13
Technical Review by CH on 2020-07-13
Independent Review by CS on 2020-07-13

Client/Project
Zayo
Fiber Optic Line--Prineville to Reno
September 2020

Figure No. **Appendix J** Page 18 of 37

Title
**SSURGO Soils Classifications
Proposed Prineville to Reno
Fiber Optic Line**



Notes

1. Coordinate System: NAD 1983 UTM Zone 10N
2. Data source: Esri 2020; USGS 2020; USDA, NRCS 2020
3. Service Layer Credits: Source: Esri, Maxar, GeoEye, Earthstar Geographics, CNES/Airbus DS, USDA, USGS, AeroGRID, IGN, and the GIS User Community

Sources: Esri, HERE, Garmin, Intermap, increment P Corp., GEBCO, USGS, FAO, NPS, NRCAN, GeoBase, IGN, Kadaster NL, Ordnance Survey, Esri Japan, METI, Esri China (Hong Kong), [c]

- Alignment
□ 500-foot Buffer
- SSURGO Soil Classification
- Mapunit Name
- Indiano-Searles association, 5 to 30 percent slopes
 - Lakeview loam, 0 to 2 percent slopes, madeline plains area, mlra 21
 - Ravendale silty clay, 0 to 2 percent slopes
 - Ravendale silty clay, 0 to 2 percent slopes, occasionally flooded
 - Saddlerock silty clay, 0 to 2 percent slopes
 - Searles-Devada-Fivesprings association, 2 to 30 percent slopes
 - Truax sandy loam, 0 to 5 percent slopes
 - Tunnison very cobbly clay, 2 to 9 percent slopes

0 0.35 0.7 Miles
1:30,000 (At Original document size of 11x17)

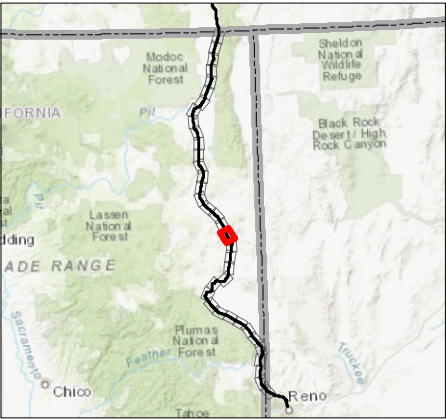


Project Location 2272020011
Prineville, OR to Reno, NV
Prepared by JC on 2020-07-13
Technical Review by CH on 2020-07-13
Independent Review by CS on 2020-07-13

Client/Project
Zayo
Fiber Optic Line--Prineville to Reno
September 2020

Figure No. **Appendix J** Page 19 of 37

**SSURGO Soils Classifications
Proposed Prineville to Reno
Fiber Optic Line**



Notes

1. Coordinate System: NAD 1983 UTM Zone 10N
2. Data source: Esri 2020; USGS 2020; USDA, NRCS 2020
3. Service Layer Credits: Source: Esri, Maxar, GeoEye, Earthstar Geographics, CNES/Airbus DS, USDA, USGS, AeroGRID, IGN, and the GIS User Community
Sources: Esri, HERE, Garmin, Intermap, increment P Corp., GEBCO, USGS, FAO, NPS, NRCAN, GeoBase, IGN, Kadaster NL, Ordnance Survey, Esri Japan, METI, Esri China (Hong Kong), [c]

- Alignment
□ 500-foot Buffer
- SSURGO Soil Classification
- Mapunit Name
- Horsecamp-Brubeck association, 2 to 9 percent slopes
 - Indiano-Searles association, 5 to 30 percent slopes
 - Loomis-Fivesprings association, 5 to 30 percent slopes
 - Shinnpeak very cobbly loam, 2 to 15 percent slopes
 - Tunnison very cobbly clay, 2 to 9 percent slopes

0 0.35 0.7 Miles
1:30,000 (At Original document size of 11x17)



Project Location 2272020011
Prineville, OR to Reno, NV
Prepared by JC on 2020-07-13
Technical Review by CH on 2020-07-13
Independent Review by CS on 2020-07-13

Client/Project
Zayo
Fiber Optic Line--Prineville to Reno
September 2020

Figure No. **Appendix J** Page 20 of 37

Title
**SSURGO Soils Classifications
Proposed Prineville to Reno
Fiber Optic Line**



Notes

1. Coordinate System: NAD 1983 UTM Zone 10N
2. Data source: Esri 2020; USGS 2020; USDA, NRCS 2020
3. Service Layer Credits: Source: Esri, Maxar, GeoEye, Earthstar Geographics, CNES/Airbus DS, USDA, USGS, AeroGRID, IGN, and the GIS User Community
Sources: Esri, HERE, Garmin, Intermap, increment P Corp., GEBCO, USGS, FAO, NPS, NRCAN, GeoBase, IGN, Kadaster NL, Ordnance Survey, Esri Japan, METI, Esri China (Hong Kong), (c)

- Alignment
□ 500-foot Buffer
- SSURGO Soil Classification
- Mapunit Name
- Corral sandy loam, 5 to 15 percent slopes
 - Horsecamp-Brubeck association, 2 to 9 percent slopes
 - Loomis-Fivesprings association, 5 to 30 percent slopes
 - Rubble land-Longcreek-Fivesprings association, 30 to 60 percent slopes
 - Saddlerock silty clay, 0 to 2 percent slopes
 - Shinnpeak very cobbly loam, 2 to 15 percent slopes
 - Smocreek silty clay loam, 0 to 2 percent slopes
 - Termo-Springmeyer-Smocreek complex, 0 to 2 percent slopes

0 0.35 0.7 Miles
1:30,000 (At Original document size of 11x17)

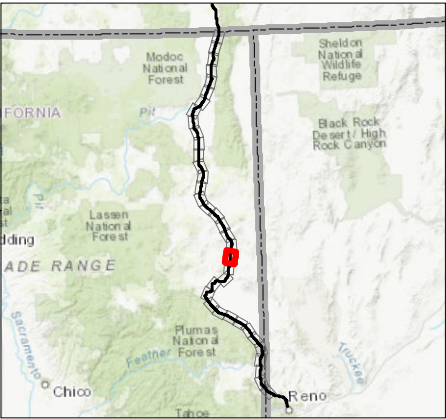


Project Location 2272020011
Prineville, OR to Reno, NV
Prepared by JC on 2020-07-13
Technical Review by CH on 2020-07-13
Independent Review by CS on 2020-07-13

Client/Project
Zayo
Fiber Optic Line--Prineville to Reno
September 2020

Figure No. **Appendix J** Page 21 of 37

Title
**SSURGO Soils Classifications
Proposed Prineville to Reno
Fiber Optic Line**



Notes

1. Coordinate System: NAD 1983 UTM Zone 10N
2. Data source: Esri 2020; USGS 2020; USDA, NRCS 2020
3. Service Layer Credits: Source: Esri, Maxar, GeoEye, Earthstar Geographics, CNES/Airbus DS, USDA, USGS, AeroGRID, IGN, and the GIS User Community
Sources: Esri, HERE, Garmin, Intermap, increment P Corp., GEBCO, USGS, FAO, NPS, NRCAN, GeoBase, IGN, Kadaster NL, Ordnance Survey, Esri Japan, METI, Esri China (Hong Kong), (c)

- Alignment
□ 500-foot Buffer
- SSURGO Soil Classification
- Mapunit Name
- Cleghorn sandy loam, 2 to 5 percent slopes
 - Corral sandy loam, 5 to 15 percent slopes
 - Gerlach cobbly silty clay, 2 to 9 percent slopes
 - Gerlach-Ravendale complex, 0 to 4 percent slopes
 - Ravendale silty clay, 0 to 2 percent slopes, ponded
 - Ravendale silty clay, saline, 0 to 1 percent slopes
 - Terro-Springmeyer-Smocreek complex, 0 to 2 percent slopes

0 0.35 0.7 Miles
1:30,000 (At Original document size of 11x17)

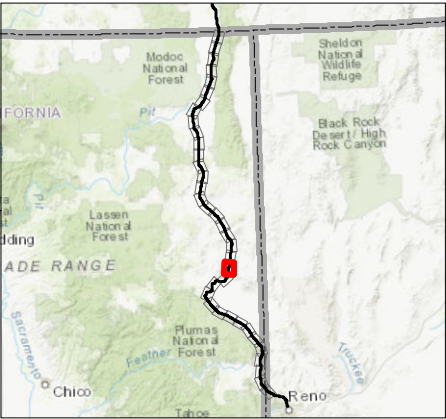


Project Location 2272020011
Prineville, OR to Reno, NV
Prepared by JC on 2020-07-13
Technical Review by CH on 2020-07-13
Independent Review by CS on 2020-07-13

Client/Project
Zayo
Fiber Optic Line--Prineville to Reno
September 2020

Figure No. **Appendix J** Page 22 of 37

Title
**SSURGO Soils Classifications
Proposed Prineville to Reno
Fiber Optic Line**



Notes

1. Coordinate System: NAD 1983 UTM Zone 10N
2. Data source: Esri 2020; USGS 2020; USDA, NRCS 2020
3. Service Layer Credits: Source: Esri, Maxar, GeoEye, Earthstar Geographics, CNES/Airbus DS, USDA, USGS, AeroGRID, IGN, and the GIS User Community
Sources: Esri, HERE, Garmin, Intermap, increment P Corp., GEBCO, USGS, FAO, NPS, NRCAN, GeoBase, IGN, Kadaster NL, Ordnance Survey, Esri Japan, METI, Esri China (Hong Kong), (c)

- Alignment
□ 500-foot Buffer
- SSURGO Soil Classification
- Mapunit Name
- Cleghorn sandy loam, 2 to 5 percent slopes
 - Devada-Rock outcrop association, 2 to 50 percent slopes
 - Gerlach cobbly silty clay, 2 to 9 percent slopes
 - Horsecamp-Brubeck association, 2 to 9 percent slopes
 - Longcreek-Devada-Rubble land complex, 9 to 30 percent slopes
 - Ravendale silty clay, 0 to 2 percent slopes, occasionally flooded
 - Ravendale silty clay, 0 to 2 percent slopes, ponded

0 0.35 0.7 Miles
1:30,000 (At Original document size of 11x17)



Project Location 2272020011
Prineville, OR to Reno, NV
Prepared by JC on 2020-07-13
Technical Review by CH on 2020-07-13
Independent Review by CS on 2020-07-13

Client/Project
Zayo
Fiber Optic Line--Prineville to Reno
September 2020

Figure No. **Appendix J** Page 23 of 37

Title
**SSURGO Soils Classifications
Proposed Prineville to Reno
Fiber Optic Line**



Notes

1. Coordinate System: NAD 1983 UTM Zone 10N
2. Data source: Esri 2020; USGS 2020; USDA, NRCS 2020
3. Service Layer Credits: Source: Esri, Maxar, GeoEye, Earthstar Geographics, CNES/Airbus DS, USDA, USGS, AeroGRID, IGN, and the GIS User Community
Sources: Esri, HERE, Garmin, Intermap, increment P Corp., GEBCO, USGS, FAO, NPS, NRCAN, GeoBase, IGN, Kadaster NL, Ordnance Survey, Esri Japan, MEI, Esri China (Hong Kong), (c)

- Alignment
- - - 500-foot Buffer
- SSURGO Soil Classification
- Mapunit Name
- Ardep sandy loam, 0 to 2 percent slopes
 - Bobert sandy loam, 0 to 2 percent slopes
 - Calpine sandy loam, 2 to 5 percent slopes
 - Devada-Rock outcrop association, 2 to 50 percent slopes
 - Fivesprings-Longcreek association, 9 to 30 percent slopes
 - Herjun loamy sand, 0 to 2 percent slopes
 - Horsecamp-Brubeck association, 2 to 9 percent slopes
 - McConnel-Mottsville complex, 2 to 9 percent slopes
 - Pits and Dumps
 - Springmeyer sandy loam, 0 to 5 percent slopes
 - Truckee-Humboldt complex, 0 to 2 percent slopes
 - Zorravista loamy sand, 0 to 5 percent slopes

0 0.35 0.7 Miles
1:30,000 (At Original document size of 11x17)

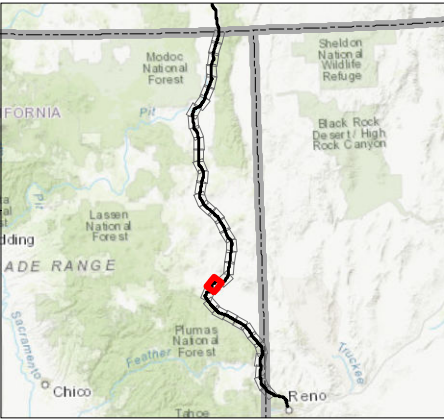


Project Location 2272020011
Prineville, OR to Reno, NV
Prepared by JC on 2020-07-13
Technical Review by CH on 2020-07-13
Independent Review by CS on 2020-07-13

Client/Project
Zayo
Fiber Optic Line--Prineville to Reno
September 2020

Figure No. **Appendix J** Page 24 of 37

**SSURGO Soils Classifications
Proposed Prineville to Reno
Fiber Optic Line**



Notes

1. Coordinate System: NAD 1983 UTM Zone 10N
2. Data source: Esri 2020; USGS 2020; USDA, NRCS 2020
3. Service Layer Credits: Source: Esri, Maxar, GeoEye, Earthstar Geographics, CNES/Airbus DS, USDA, USGS, AeroGRID, IGN, and the GIS User Community

Sources: Esri, HERE, Garmin, Intermap, increment P Corp., GEBCO, USGS, FAO, NPS, NRCAN, GeoBase, IGN, Kadaster NL, Ordnance Survey, Esri Japan, METI, Esri China (Hong Kong), (c)

- Alignment
[] 500-foot Buffer
- SSURGO Soil Classification
- Mapunit Name
- Ardep sandy loam, 0 to 2 percent slopes
 - Blickenstaff sandy loam, 0 to 2 percent slopes
 - Robert sandy loam, 0 to 2 percent slopes
 - Calpine sandy loam, 0 to 2 percent slopes
 - Calpine sandy loam, 2 to 5 percent slopes
 - Cewa-McConnel-Toulon association, 2 to 15 percent slopes
 - Fordney loamy fine sand, wet, 0 to 2 percent slopes
 - Herjun loamy sand, 0 to 2 percent slopes
 - Honlak loam, 0 to 2 percent slopes
 - Humboldt silty clay loam, saline, 0 to 2 percent slopes, occasionally flooded
 - Humboldt silty clay, 0 to 1 percent slopes, occasionally flooded
 - McConnel-Mottsville complex, 2 to 9 percent slopes
 - Modoc-Truax complex, 0 to 2 percent slopes
 - Smocreek silt loam, sodic, 0 to 2 percent slopes
 - Springmeyer sandy clay loam, 0 to 2 percent slopes
 - Springmeyer sandy loam, 0 to 5 percent slopes
 - Susanville-Smocreek complex, 0 to 2 percent slopes
 - Truckee-Humboldt complex, 0 to 2 percent slopes

0 0.35 0.7 Miles
1:30,000 (At Original document size of 11x17)



Project Location 2272020011
Prineville, OR to Reno, NV
Prepared by JC on 2020-07-13
Technical Review by CH on 2020-07-13
Independent Review by CS on 2020-07-13

Client/Project
Zayo
Fiber Optic Line--Prineville to Reno
September 2020

Figure No. **Appendix J** Page 25 of 37

Title
**SSURGO Soils Classifications
Proposed Prineville to Reno
Fiber Optic Line**



Notes

1. Coordinate System: NAD 1983 UTM Zone 10N
2. Data source: Esri 2020; USGS 2020; USDA, NRCS 2020
3. Service Layer Credits: Source: Esri, Maxar, GeoEye, Earthstar Geographics, CNES/Airbus DS, USDA, USGS, AeroGRID, IGN, and the GIS User Community
Sources: Esri, HERE, Garmin, Intermap, increment P Corp., GEBCO, USGS, FAO, NPS, NRCAN, GeoBase, IGN, Kadaster NL, Ordnance Survey, Esri Japan, METI, Esri China (Hong Kong), (c)

- Alignment
- - - 500-foot Buffer
- SSURGO Soil Classification
- Mapunit Name
- Arday sandy loam, 2 to 9 percent slopes
 - Blickenstaff sandy loam, 0 to 2 percent slopes
 - Robert sandy loam, 0 to 2 percent slopes
 - Calpine sandy loam, 0 to 2 percent slopes
 - Fluvents-Riverwash complex, 0 to 1 percent slopes
 - Fordney loamy fine sand, wet, 0 to 2 percent slopes
 - Honlak loam, 0 to 2 percent slopes
 - Massack loam, 0 to 2 percent slopes
 - Mottsville gravelly loamy coarse sand, 9 to 15 percent slopes
 - Mottsville loamy coarse sand, 0 to 2 percent slopes
 - Mottsville loamy coarse sand, 2 to 9 percent slopes
 - Pits and Dumps
 - Plinco gravelly sandy loam, 0 to 2 percent slopes
 - Plinco loam, 2 to 9 percent slopes
 - Truckee loam, 0 to 2 percent slopes

0 0.35 0.7 Miles
1:30,000 (At Original document size of 11x17)

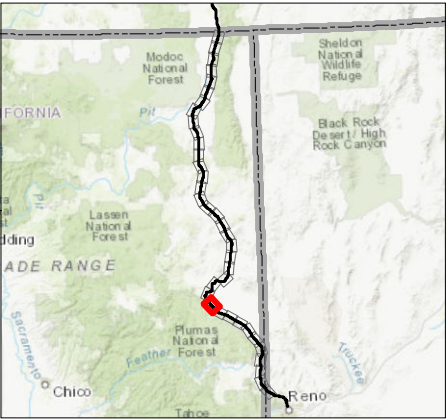


Project Location 2272020011
Prineville, OR to Reno, NV
Prepared by JC on 2020-07-13
Technical Review by CH on 2020-07-13
Independent Review by CS on 2020-07-13

Client/Project
Zayo
Fiber Optic Line--Prineville to Reno
September 2020

Figure No. **Appendix J** Page 26 of 37

**SSURGO Soils Classifications
Proposed Prineville to Reno
Fiber Optic Line**



Notes

1. Coordinate System: NAD 1983 UTM Zone 10N
2. Data source: Esri 2020; USGS 2020; USDA, NRCS 2020
3. Service Layer Credits: Source: Esri, Maxar, GeoEye, Earthstar Geographics, CNES/Airbus DS, USDA, USGS, AeroGRID, IGN, and the GIS User Community
Sources: Esri, HERE, Garmin, Intermap, increment P Corp., GEBCO, USGS, FAO, NPS, NRCAN, GeoBase, IGN, Kadaster NL, Ordnance Survey, Esri Japan, METI, Esri China (Hong Kong), [c]

- Alignment
□ 500-foot Buffer
- SSURGO Soil Classification
- Mapunit Name
- Arroyo sandy loam, 2 to 9 percent slopes
 - Bonta coarse sandy loam, 9 to 15 percent slopes
 - Calpine sandy loam, 2 to 5 percent slopes
 - Calpine, warm, 0 to 15 percent slopes
 - Chimney gravelly loamy coarse sand, 2 to 9 percent slopes
 - Chimney-Janile-Waterman association, 50 to 75 percent slopes
 - Mottville gravelly loamy coarse sand, 9 to 15 percent slopes
 - Mottville loamy coarse sand, 2 to 9 percent slopes
 - Plinco loam, 2 to 9 percent slopes

0 0.35 0.7 Miles
1:30,000 (At Original document size of 11x17)

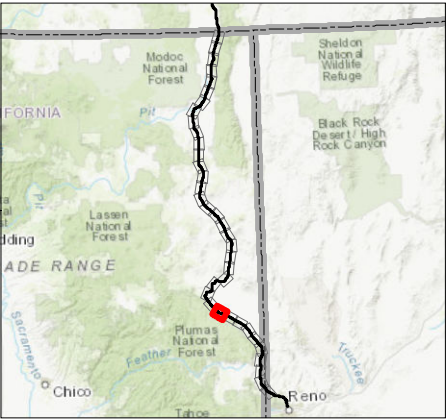


Project Location 2272020011
Prineville, OR to Reno, NV
Prepared by JC on 2020-07-13
Technical Review by CH on 2020-07-13
Independent Review by CS on 2020-07-13

Client/Project
Zayo
Fiber Optic Line--Prineville to Reno
September 2020

Figure No. **Appendix J** Page 27 of 37

Title
**SSURGO Soils Classifications
Proposed Prineville to Reno
Fiber Optic Line**



Notes

1. Coordinate System: NAD 1983 UTM Zone 10N
2. Data source: Esri 2020; USGS 2020; USDA, NRCS 2020
3. Service Layer Credits: Source: Esri, Maxar, GeoEye, Earthstar Geographics, CNES/Airbus DS, USDA, USGS, AeroGRID, IGN, and the GIS User Community

Sources: Esri, HERE, Garmin, Intermap, increment P Corp., GEBCO, USGS, FAO, NPS, NRCAN, GeoBase, IGN, Kadaster NL, Ordnance Survey, Esri Japan, METI, Esri China (Hong Kong), (c)

- Alignment
□ 500-foot Buffer
- SSURGO Soil Classification
- Mapunit Name
- Arroyo sandy loam, 2 to 9 percent slopes
 - Calpine sandy loam, 2 to 5 percent slopes
 - Calpine, warm, 0 to 15 percent slopes
 - Chimney-Waterman association, 9 to 30 percent slopes
 - Mottsville gravelly loamy coarse sand, 0 to 2 percent slopes
 - Mottsville gravelly loamy coarse sand, 15 to 30 percent slopes
 - Mottsville loamy coarse sand, 2 to 9 percent slopes
 - Plinco loam, 2 to 9 percent slopes

0 0.35 0.7 Miles
1:30,000 (At Original document size of 11x17)

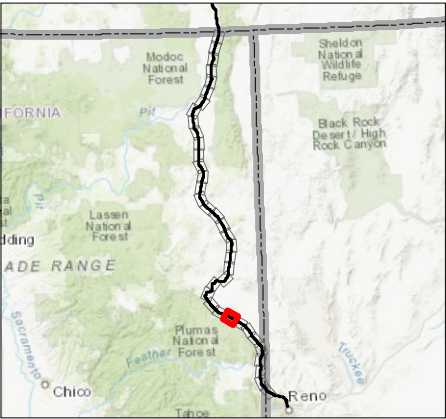


Project Location 2272020011
Prineville, OR to Reno, NV
Prepared by JC on 2020-07-13
Technical Review by CH on 2020-07-13
Independent Review by CS on 2020-07-13

Client/Project
Zayo
Fiber Optic Line--Prineville to Reno
September 2020

Figure No. **Appendix J** Page 28 of 37

Title
**SSURGO Soils Classifications
Proposed Prineville to Reno
Fiber Optic Line**



Notes

1. Coordinate System: NAD 1983 UTM Zone 10N
2. Data source: Esri 2020; USGS 2020; USDA, NRCS 2020
3. Service Layer Credits: Source: Esri, Maxar, GeoEye, Earthstar Geographics, CNES/Airbus DS, USDA, USGS, AeroGRID, IGN, and the GIS User Community
Sources: Esri, HERE, Garmin, Intermap, increment P Corp., GEBCO, USGS, FAO, NPS, NRCAN, GeoBase, IGN, Kadaster NL, Ordnance Survey, Esri Japan, METI, Esri China (Hong Kong), (c)

- Alignment
□ 500-foot Buffer
- SSURGO Soil Classification
- Mapunit Name
- Calpine sandy loam, 2 to 5 percent slopes
 - Honeylake clay loam, 0 to 1 percent slopes
 - Honlak loam, 0 to 2 percent slopes
 - Mottsville gravelly loamy coarse sand, 0 to 2 percent slopes
 - Mottsville gravelly loamy coarse sand, 2 to 9 percent slopes
 - Mottsville gravelly loamy coarse sand, 9 to 15 percent slopes
 - Mottsville loamy coarse sand, 2 to 9 percent slopes
 - Truckee loam, 0 to 2 percent slopes

0 0.35 0.7 Miles
1:30,000 (At Original document size of 11x17)

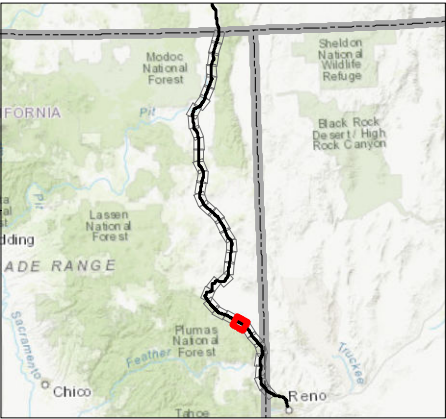


Project Location 2272020011
Prineville, OR to Reno, NV
Prepared by JC on 2020-07-13
Technical Review by CH on 2020-07-13
Independent Review by CS on 2020-07-13

Client/Project
Zayo
Fiber Optic Line--Prineville to Reno
September 2020

Figure No. **Appendix J** Page 29 of 37

Title
**SSURGO Soils Classifications
Proposed Prineville to Reno
Fiber Optic Line**



Notes

1. Coordinate System: NAD 1983 UTM Zone 10N
2. Data source: Esri 2020; USGS 2020; USDA, NRCS 2020
3. Service Layer Credits: Source: Esri, Maxar, GeoEye, Earthstar Geographics, CNES/Airbus DS, USDA, USGS, AeroGRID, IGN, and the GIS User Community
Sources: Esri, HERE, Garmin, Intermap, increment P Corp., GEBCO, USGS, FAO, NPS, NRCAN, GeoBase, IGN, Kadaster NL, Ordnance Survey, Esri Japan, METI, Esri China (Hong Kong), (c)

- Alignment
□ 500-foot Buffer
- SSURGO Soil Classification
- Mapunit Name
- Badenaugh stony sandy loam, 5 to 15 percent slopes
 - Calpine sandy loam, 2 to 5 percent slopes
 - Galeppi sandy loam, 2 to 5 percent slopes
 - Honeylake clay loam, 0 to 1 percent slopes
 - Mottsville gravelly loamy coarse sand, 0 to 2 percent slopes
 - Mottsville gravelly loamy coarse sand, 15 to 30 percent slopes
 - Mottsville gravelly loamy coarse sand, 2 to 9 percent slopes
 - Mottsville gravelly loamy coarse sand, 9 to 15 percent slopes
 - Pits and Dumps
 - Truckee loam, 0 to 2 percent slopes

0 0.35 0.7 Miles
1:30,000 (At Original document size of 11x17)

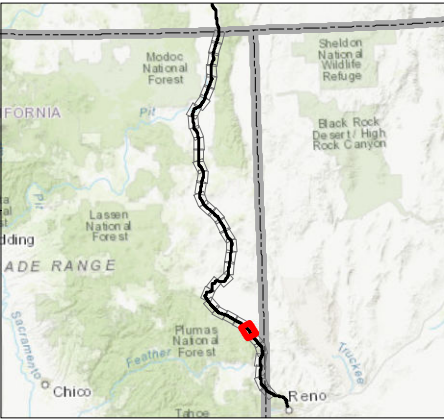


Project Location 2272020011
Prineville, OR to Reno, NV
Prepared by JC on 2020-07-13
Technical Review by CH on 2020-07-13
Independent Review by CS on 2020-07-13

Client/Project
Zayo
Fiber Optic Line--Prineville to Reno
September 2020

Figure No. **Appendix J** Page 30 of 37

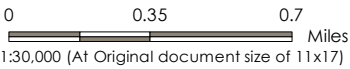
Title
**SSURGO Soils Classifications
Proposed Prineville to Reno
Fiber Optic Line**



| | |
|----------------------------|--|
| | Alignment |
| | 500-foot Buffer |
| SSURGO Soil Classification | |
| Mapunit Name | |
| | Ardep sandy loam, 0 to 2 percent slopes |
| | Badenaugh stony sandy loam, 5 to 15 percent slopes |
| | Robert sandy loam, 0 to 2 percent slopes |
| | Calpine sandy loam, 0 to 2 percent slopes |
| | Fluvents-Riverwash complex, 0 to 1 percent slopes |
| | Galeppi sandy loam, 2 to 5 percent slopes |
| | Mottsville gravelly loamy coarse sand, 0 to 2 percent slopes |
| | Mottsville gravelly loamy coarse sand, 2 to 9 percent slopes |
| | Mottsville-Galeppi association, 15 to 50 percent slopes |
| | Pits and Dumps |
| | Standish fine sandy loam, 0 to 2 percent slopes |

Notes

1. Coordinate System: NAD 1983 UTM Zone 10N
2. Data source: Esri 2020; USGS 2020; USDA, NRCS 2020
3. Service Layer Credits: Source: Esri, Maxar, GeoEye, Earthstar Geographics, CNES/Airbus DS, USDA, USGS, AeroGRID, IGN, and the GIS User Community
Sources: Esri, HERE, Garmin, Intermap, increment P Corp., GEBCO, USGS, FAO, NPS, NRCAN, GeoBase, IGN, Kadaster NL, Ordnance Survey, Esri Japan, METI, Esri China (Hong Kong), (c)



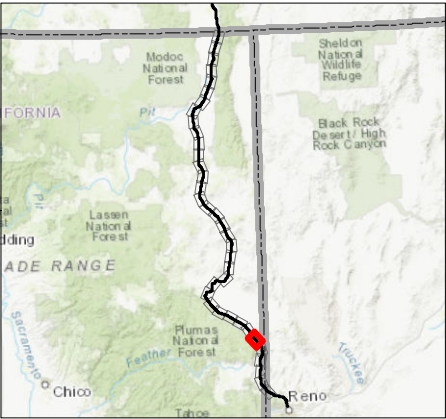
| | |
|----------------------------|--|
| Project Location | 2272020011 |
| Prineville, OR to Reno, NV | Prepared by JC on 2020-07-13 Technical Review by CH on 2020-07-13 Independent Review by CS on 2020-07-13 |

Client/Project

Zayo
Fiber Optic Line--Prineville to Reno
September 2020

| | |
|-------------------|---------------|
| Figure No. | Page 31 of 37 |
| Appendix J | |

**SSURGO Soils Classifications
Proposed Prineville to Reno
Fiber Optic Line**



Notes

1. Coordinate System: NAD 1983 UTM Zone 10N
2. Data source: Esri 2020; USGS 2020; USDA, NRCS 2020
3. Service Layer Credits: Source: Esri, Maxar, GeoEye, Earthstar Geographics, CNES/Airbus DS, USDA, USGS, AeroGRID, IGN, and the GIS User Community
Sources: Esri, HERE, Garmin, Intermap, increment P Corp., GEBCO, USGS, FAO, NPS, NRCAN, GeoBase, IGN, Kadaster NL, Ordnance Survey, Esri Japan, METI, Esri China (Hong Kong), (c)

- Alignment
□ 500-foot Buffer
- SSURGO Soil Classification
- Mapunit Name
- Badenaugh stony sandy loam, 5 to 15 percent slopes
 - Bobert sandy loam, 0 to 2 percent slopes
 - Calpine sandy loam, 0 to 2 percent slopes
 - Fortsage fine sandy loam, 0 to 2 percent slopes
 - Fortsage silt loam, 0 to 2 percent slopes
 - Honeylake clay loam, 0 to 1 percent slopes
 - Mottsville gravelly loamy coarse sand, 2 to 9 percent slopes
 - Pits and Dumps
 - Rose Creek loam, 0 to 1 percent slopes
 - Rose Creek loam, sodic, 0 to 2 percent slopes
 - Water

0 0.35 0.7 Miles
1:30,000 (At Original document size of 11x17)

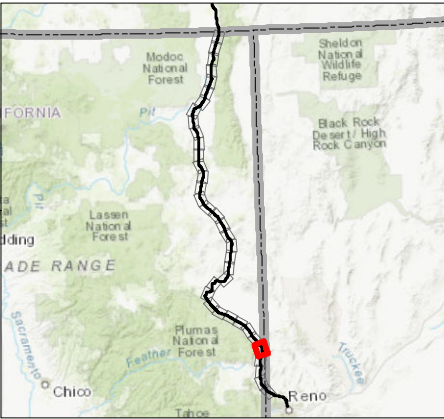


Project Location 2272020011
Prineville, OR to Reno, NV
Prepared by JC on 2020-07-13
Technical Review by CH on 2020-07-13
Independent Review by CS on 2020-07-13

Client/Project
Zayo
Fiber Optic Line--Prineville to Reno
September 2020

Figure No. **Appendix J** Page 32 of 37

Title
**SSURGO Soils Classifications
Proposed Prineville to Reno
Fiber Optic Line**

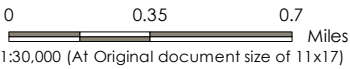


Notes

1. Coordinate System: NAD 1983 UTM Zone 10N
2. Data source: Esri 2020; USGS 2020; USDA, NRCS 2020
3. Service Layer Credits: Source: Esri, Maxar, GeoEye, Earthstar Geographics, CNES/Airbus DS, USDA, USGS, AeroGRID, IGN, and the GIS User Community
Sources: Esri, HERE, Garmin, Intermap, increment P Corp., GEBCO, USGS, FAO, NPS, NRCAN, GeoBase, IGN, Kadaster NL, Ordnance Survey, Esri Japan, METI, Esri China (Hong Kong), (c)

- Alignment

500-foot Buffer
- SSURGO Soil Classification
- Mapunit Name
- Corral-Glenbrook complex, 15 to 50 percent slopes
 - Fluvents-Riverwash complex, 0 to 1 percent slopes
 - Fortsage silt loam, 0 to 2 percent slopes
 - Galeppi sandy loam, 5 to 30 percent slopes
 - Graufels-Glenbrook complex, 5 to 30 percent slopes
 - Mottsville gravelly loamy coarse sand, 0 to 2 percent slopes
 - Mottsville gravelly loamy coarse sand, 2 to 9 percent slopes
 - Pits and Dumps
 - Plinco loam, 2 to 9 percent slopes
 - Rose Creek loam, sodic, 0 to 2 percent slopes
 - Smocreek silty clay loam, 0 to 2 percent slopes



Project Location

Prineville, OR to Reno, NV

2272020011

Prepared by JC on 2020-07-13

Technical Review by CH on 2020-07-13

Independent Review by CS on 2020-07-13

Client/Project

Zayo

Fiber Optic Line--Prineville to Reno

September 2020

Figure No.

Appendix J

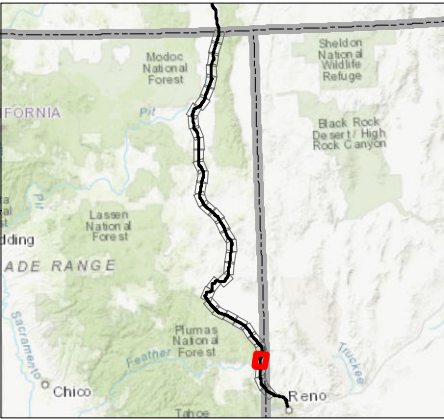
Page 33 of 37

Title

SSURGO Soils Classifications

Proposed Prineville to Reno

Fiber Optic Line



Notes

1. Coordinate System: NAD 1983 UTM Zone 10N
2. Data source: Esri 2020; USGS 2020; USDA, NRCS 2020
3. Service Layer Credits: Source: Esri, Maxar, GeoEye, Earthstar Geographics, CNES/Airbus DS, USDA, USGS, AeroGRID, IGN, and the GIS User Community
Sources: Esri, HERE, Garmin, Intermap, increment P Corp., GEBCO, USGS, FAO, NPS, NRCAN, GeoBase, IGN, Kadaster NL, Ordnance Survey, Esri Japan, METI, Esri China (Hong Kong), (c)

- Alignment
- - - 500-foot Buffer
- SSURGO Soil Classification
- Mapunit Name
- Barnard stony sandy loam, 2 to 15 percent slopes
 - Corral-Glenbrook complex, 15 to 50 percent slopes
 - Fluvents-Riverwash complex, 0 to 1 percent slopes
 - Galeppi cobbly loamy coarse sand, 5 to 30 percent slopes
 - Galeppi loamy coarse sand, 2 to 5 percent slopes
 - Galeppi loamy coarse sand, 5 to 30 percent slopes
 - Galeppi sandy loam, 2 to 5 percent slopes
 - Galeppi sandy loam, 5 to 30 percent slopes
 - Glenbrook-Graufels-Rock outcrop complex, 30 to 60 percent slopes
 - Graufels-Glenbrook complex, 5 to 30 percent slopes
 - Reba sandy loam, 2 to 30 percent slopes
 - Reno sandy loam, 2 to 15 percent slopes
 - Rough broken land
 - Smocreek silty clay loam, 0 to 2 percent slopes
 - Verdico-Chalco association, 2 to 30 percent slopes

0 0.35 0.7 Miles
1:30,000 (At Original document size of 11x17)

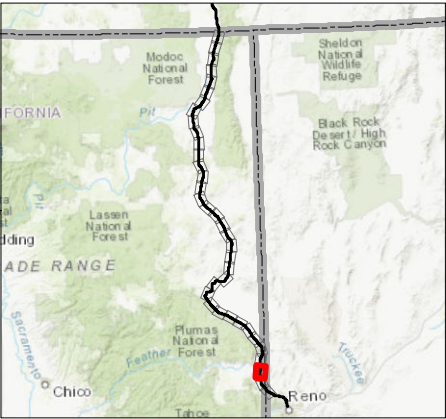


Project Location 2272020011
Prineville, OR to Reno, NV
Prepared by JC on 2020-07-13
Technical Review by CH on 2020-07-13
Independent Review by CS on 2020-07-13

Client/Project
Zayo
Fiber Optic Line--Prineville to Reno
September 2020

Figure No. Title
Appendix J Page 34 of 37

**SSURGO Soils Classifications
Proposed Prineville to Reno
Fiber Optic Line**



Notes

1. Coordinate System: NAD 1983 UTM Zone 10N
2. Data source: Esri 2020; USGS 2020; USDA, NRCS 2020
3. Service Layer Credits: Source: Esri, Maxar, GeoEye, Earthstar Geographics, CNES/Airbus DS, USDA, USGS, AeroGRID, IGN, and the GIS User Community
Sources: Esri, HERE, Garmin, Intermap, increment P Corp., GEBCO, USGS, FAO, NPS, NRCAN, GeoBase, IGN, Kadaster NL, Ordnance Survey, Esri Japan, METI, Esri China (Hong Kong), (c)

- Alignment
[] 500-foot Buffer
- SSURGO Soil Classification
- Mapunit Name
- Galeppi cobbly loamy coarse sand, 5 to 30 percent slopes
 - Galeppi loamy coarse sand, 2 to 5 percent slopes
 - Galeppi loamy coarse sand, 5 to 30 percent slopes
 - Reba sandy loam, 2 to 30 percent slopes
 - Reno sandy loam, 2 to 15 percent slopes
 - Rough broken land
 - Saralegui sandy loam, 2 to 15 percent slopes

0 0.35 0.7 Miles
1:30,000 (At Original document size of 11x17)



Project Location 227200011
Prineville, OR to Reno, NV
Prepared by JC on 2020-07-13
Technical Review by CH on 2020-07-13
Independent Review by CS on 2020-07-13

Client/Project
Zayo
Fiber Optic Line--Prineville to Reno
September 2020

Figure No. **Appendix J** Page 35 of 37

**SSURGO Soils Classifications
Proposed Prineville to Reno
Fiber Optic Line**



Notes

1. Coordinate System: NAD 1983 UTM Zone 10N
2. Data source: Esri 2020; USGS 2020; USDA, NRCS 2020
3. Service Layer Credits: Source: Esri, Maxar, GeoEye, Earthstar Geographics, CNES/Airbus DS, USDA, USGS, AeroGRID, IGN, and the GIS User Community
Sources: Esri, HERE, Garmin, Intermap, increment P Corp., GEBCO, USGS, FAO, NPS, NRCAN, GeoBase, IGN, Kadaster NL, Ordnance Survey, Esri Japan, METI, Esri China (Hong Kong), (c)

- Alignment
500-foot Buffer
- SSURGO Soil Classification
- Mapunit Name
- Bidwell sandy loam, 0 to 2 percent slopes
 - Coolbrith silt loam, 0 to 2 percent slopes
 - Coolbrith silt loam, 2 to 5 percent slopes
 - Galeppi cobbly loamy coarse sand, 5 to 30 percent slopes
 - Galeppi loamy coarse sand, 2 to 5 percent slopes
 - Galeppi loamy coarse sand, 5 to 30 percent slopes
 - Northmore sandy loam, 4 to 8 percent slopes
 - Northmore sandy loam, 8 to 15 percent slopes
 - Reba sandy loam, 2 to 30 percent slopes
 - Reno sandy loam, 2 to 15 percent slopes
 - Riverwash
 - Rough broken land
 - Saralegui sandy loam, 2 to 15 percent slopes

0 0.35 0.7 Miles
1:30,000 (At Original document size of 11x17)

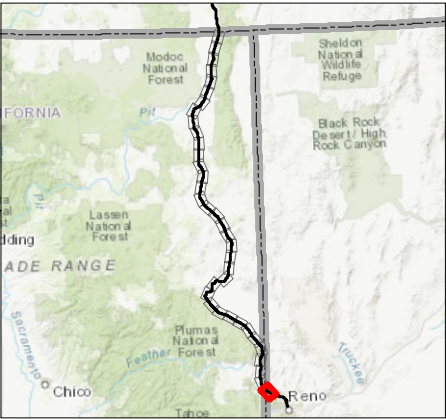


Project Location 2272020011
Prineville, OR to Reno, NV
Prepared by JC on 2020-07-13
Technical Review by CH on 2020-07-13
Independent Review by CS on 2020-07-13

Client/Project
Zayo
Fiber Optic Line--Prineville to Reno
September 2020

Figure No. **Appendix J** Page 36 of 37

Title
**SSURGO Soils Classifications
Proposed Prineville to Reno
Fiber Optic Line**



Notes

1. Coordinate System: NAD 1983 UTM Zone 10N
2. Data source: Esri 2020; USGS 2020; USDA, NRCS 2020
3. Service Layer Credits: Source: Esri, Maxar, GeoEye, Earthstar Geographics, CNES/Airbus DS, USDA, USGS, AeroGRID, IGN, and the GIS User Community
- Sources: Esri, HERE, Garmin, Intermap, increment P Corp., GEBCO, USGS, FAO, NPS, NRCAN, GeoBase, IGN, Kadaster NL, Ordnance Survey, Esri Japan, METI, Esri China (Hong Kong), (c)

- Alignment
□ 500-foot Buffer
- SSURGO Soil Classification
- Mapunit Name
- Bidwell sandy loam, 0 to 2 percent slopes
 - Northmore sandy loam, 4 to 8 percent slopes
 - Northmore sandy loam, 8 to 15 percent slopes
 - Reba sandy loam, 2 to 30 percent slopes

0 0.35 0.7 Miles
1:30,000 (At Original document size of 11x17)



Project Location 2272020011
Prineville, OR to Reno, NV
Prepared by JC on 2020-07-13
Technical Review by CH on 2020-07-13
Independent Review by CS on 2020-07-13

Client/Project
Zayo
Fiber Optic Line--Prineville to Reno
September 2020

Figure No. **Appendix J** Page 37 of 37

Title
**SSURGO Soils Classifications
Proposed Prineville to Reno
Fiber Optic Line**